



**NSW  
Resources  
Regulator**

**FWP0001525**

# **LYNTON LIMESTONE QUARRY FORWARD PROGRAM**

**Saturday 26 October 2024 to Monday 25 October 2027**

## Summary

### DETAIL

<b>Mine</b>	Lynton Limestone Quarry
<b>Reference</b>	FWP0001525
<b>Forward program commencement date</b>	Saturday 26 October 2024
<b>Forward program end date</b>	Monday 25 October 2027
<b>Forward program revision (if applicable)</b>	
<b>Contact</b>	Jack Flanagan
<b>Mining leases</b>	ML 1568 (1992)
<b>Project location</b>	Ezy Lime Pty Limited
<b>Date of submission</b>	Friday 24 January 2025

## Important

The department may make the information in your program and any supporting information available for inspection by members of the public, including by publication on its website or by displaying the information at any of its offices. If you consider any part of your program to be confidential, please communicate this to the department via the message function on this submission within the NSW Resources Regulator Portal.

# Three-year forecast – surface disturbance activities

## Project description

The Ezylime Mine (the Mine) is located on Lot 64 DP 750163, Gunningbland, which is owned by Mr W. Dunford and located approximately 20km west of Parkes, NSW. All activities associated with the Mine are undertaken within an area identified as the “Mine Site”, commensurate with the boundary of ML 1568. Development Application (DA) 00110 was granted on 20 October 2005 to permit the extraction of limestone within Lot 64 DP750163. DA 00110 approves extraction of an average of 4,167 tonnes per month (50,000t per annum) from the approved extraction area which contains a total resource of approximately 1.65 million tonnes. Extraction activities at the Mine commenced in 2005 and are anticipated to continue until 2045. The Mine primarily produces agricultural limestone which is supplied to the local Co-operative, local farmers, and the surrounding region. Crushed rock suitable for use as road base is also sold to both the private and public sector.

## Description of surface disturbance activities

### Exploration activities

No exploration activities are scheduled to occur within the Mine Site during the next three year period.

### Construction activities

There are currently no construction activities scheduled for the next three year period beyond the ongoing mining of limestone from within the approved extraction area.

### Mining schedule

Mining development method and sequencing and general mine features.

Extraction of limestone is limited to the approved extraction area, with ongoing extraction gradually proceeding towards the north-eastern boundary of the approved extraction boundary (Plan 1A). Approved mining operations comprise of drill and blast open cut mining. Recovered overburden is relocated into completed sections of the extraction area and shaped to form the final landform, where practicable, or temporarily stockpiled within the overburden emplacement area (Plan 1A). Processing, including crushing and screening, or limestone materials and stockpiling of limestone products occurs on site. Products are progressively loaded and transported to points of use using a front-end loader and road-registered trucks.

Areas identified for emplacements, the sequencing of emplacements, construction, and management.

Cleared vegetation is temporarily stockpiled adjacent to the extraction area for use in progressive rehabilitation activities, including for future use as habitat structures. Stripped soil material is stockpiled adjacent to the active extraction area for progressive rehabilitation activities. Overburden material is relocated to completed sections of the extraction area and shaped to form the final landform, where practicable, or temporarily stockpiled. Limestone materials are stockpiled within the extraction area and/or the stockpiling area.

Processing infrastructure activities and the location of tailings facilities and schedule for emplacement.

Processing, including crushing and screening of limestone materials, is undertaken onsite. The existing processing plant located within the extraction area would continue to be utilised for the next three years. There are no tailings areas or facilities at the Mine.

Waste disposal and materials handling operations.

Production waste (i.e. non-saleable product, overburden) will continue to be used for landform profiling operations. Non-product waste will continue to be managed as follows. - General waste will be segregated into recyclable and non-recyclable materials and removed from site to a licenced waste facility. - Pump out toilet facilities are provided and are serviced by a licenced contractor. - Waste hydrocarbons are stored onsite in bunded areas and are then subsequently removed by a third party

### Key production milestones

MATERIAL	UNIT	YEAR 1	YEAR 2	YEAR 3
<b>Stripped topsoil</b> (if applicable)	(m <sup>3</sup> )	0	0	0
<b>Rock/overburden</b>	(m <sup>3</sup> )	0	756	0
<b>Ore</b>	(Mt)	0.07	0.07	0.07
<b>Reject material<sup>1</sup></b>	(Mt)	0	0	0
<b>Product</b>	(Mt)	0.7	0.07	0.07

<sup>1</sup> This includes coarse rejects, tailings and any other wastes resulting from beneficiation.

# Three-year rehabilitation forecast

## Rehabilitation planning schedule

### Rehabilitation planning schedule

No additional areas of disturbance are expected to become available for rehabilitation operations during the next three year period. As a result limited potential exists for progressive rehabilitation during the next three year period. Materials to be used during rehabilitation will continue to be stockpiled at the Mine site for future use during the next three year period as extraction progresses within the approved extraction area.

### Stakeholder consultation

No further stakeholder consultation is currently planned or considered necessary during the next 3 year period.

### Rehabilitation studies, risk assessments and/or design work

Given the fact that rehabilitation operations are not expected to commence until development of the Extraction Areas has progressed significantly, no rehabilitation research or rehabilitation trials are expected to be undertaken within the Mine Site during the next three years. Rehabilitation research and trials will commence once an area of suitable size within the Extraction Area has been developed and is no longer required for ongoing mining operations. Indicatively, this will include trials to confirm the optimal: • substrate and growth medium depth and treatment; and • revegetation species and methodologies. The results of the rehabilitation research and trials will be presented in the Annual Rehabilitation Report for the Mine.

## Rehabilitation research and trials

RRT NUMBER	PROJECT/TRIAL NAME	OBJECTIVE OF TRIAL/PROJECT	METHODOLOGY	EXPECTED DATE OF COMPLETION	STATUS
------------	--------------------	----------------------------	-------------	-----------------------------	--------

FWP0001  
525

## Rehabilitation maintenance and corrective actions

No rehabilitation performance issues or knowledge gaps were identified in the Annual Rehabilitation Report.

## Rehabilitation schedule

No additional areas of disturbance are expected to become available for rehabilitation operations during the next three year period. As a result limited potential exists for progressive rehabilitation during the next three year period. The constrained nature of the site and progressive development of the Extraction Area minimise disturbance.

## Completion of rehabilitation

No application for rehabilitation completion is expected to be lodged with the Resources Regulator within the next 3 years. Rehabilitation completion and sign off is not expected to be requested until after the cessation of mining.

## Subsidence remediation for underground operations

No underground operations are conducted as part of the Mine's operations.

## Progressive mining and rehabilitation statistics

### Three-yearly forecast cumulative disturbance and rehabilitation progression

FORECAST	UNIT	YEAR 1	YEAR 2	YEAR 3
<b>A Total surface disturbance footprint</b>	(ha)	9.91	10.31	10.98
<b>B Total active disturbance</b>	(ha)	9.91	10.31	10.98
<b>P Total new area of land proposed for active rehabilitation</b>	(ha)	0	0	0

### Rehabilitation key performance indicators (KPIs)

FORECAST	UNIT	YEAR 1	YEAR 2	YEAR 3
<b>O Total new active disturbance area</b>	(ha)	0.26	0.4	0.67
<b>P Total new area of land proposed for active rehabilitation during the reporting period</b>	(ha)			
<b>Q Annual rehabilitation to disturbance ratio</b>				

# Attachment 1 – Reporting Definitions

REPORTING CATEGORY	DEFINITION
<p><b>A</b> Total disturbance footprint – surface disturbance</p>	<p>All areas within a mining lease that either have at some point in time or continue to pose a rehabilitation liability due to surface disturbance activities.</p> <p>The total disturbance footprint is the sum of the total active disturbance, decommissioning, landform establishment, growth medium development, ecosystem and land use establishment, ecosystem and land use development and rehabilitation completion (see definitions below).</p> <p>Underground mining operations should not include the footprint of underground mining areas/subsidence management areas in the total disturbance footprint.</p>
<p><b>B</b> Total active disturbance</p>	<p>Includes on-lease exploration areas, stripped areas ahead of mining, infrastructure areas, water management infrastructure, sewage treatment facilities, topsoil stockpile areas, access tracks and haul roads, active mining areas, waste rock emplacements (active/unshaped/in or out-of-pit), tailings dams (active/unshaped/uncapped) and temporary stabilised areas (e.g. areas sown with temporary cover crops for dust mitigation and temporary rehabilitation).</p>
<p><b>C</b> Rehabilitation – land preparation</p>	<p>Includes the sum of all disturbed land within a mining lease that have commenced any, or all, of the following phases of rehabilitation – decommissioning, landform establishment and growth medium development.</p> <p>Refer to the glossary of terms in this document for the definition of these phases of rehabilitation.</p>
<p><b>D</b> Ecosystem and land use establishment</p>	<p>Includes the area which has been seeded/planted with the target vegetation species for the intended final land use. However, vegetation has not matured to a stage where it can be demonstrated that it will be sustainable for the long term and or require only a maintenance regime consistent with target reference/analogue sites.</p> <p>Typically, rehabilitation areas would be in this phase for at least two years (and usually more) before rehabilitation can be classified as being in the ecosystem and land use development phase. This phase does not apply to infrastructure areas that are being retained as part of final land use for the site.</p>

REPORTING CATEGORY	DEFINITION
O	The area of any new active disturbance that will be created during the next three years, as defined under definition A1 (definition A1 Table 5).
P	The sum of any new rehabilitation to be commenced in the next three years. These areas may be in the phases “Rehabilitation - Land Preparation” or the “Ecosystem & Land Use Establishment” (definitions C & D in Table 5).
Q	The rehabilitation to disturbance ratio (S / R) indicates how many hectares of new rehabilitation are undertaken for each hectare of land disturbed during the three years. A ratio of 1/1 indicates that the area of new rehabilitation and disturbance in that period are the same.

## Attachment 2 – Definitions

WORD	DEFINITION
<b>Active</b>	In the context of rehabilitation, land associated with mining domains is considered ‘active’ for the period following disturbance until the commencement of rehabilitation.
<b>Active mining phase of rehabilitation</b>	In the context of rehabilitation, the active mining phase of rehabilitation constitutes the rehabilitation activities undertaken during mining operations such as salvaging and managing soil resources, salvaging habitat resources, and native seed collection. This phase also includes management actions taken during operations to manage risks to rehabilitation and enhance rehabilitation outcomes such as selective handling of waste rock and management of tailings emplacements.
<b>Analogue site</b>	In the context of rehabilitation, an analogue site is a ‘reference site’ that represents an example of the defining characteristics (such as vegetation composition and structure or agricultural productivity) of the final land use. Characteristics of analogue sites can be assessed to develop the rehabilitation objectives and completion criteria for final land use domains.
<b>Annual rehabilitation report and forward program</b>	As described in the Mining Regulation 2016.
<b>Annual reporting period</b>	As defined in the Mining Regulation 2016.
<b>Closure</b>	A whole-of-mine-life process, which typically culminates in the relinquishment of the mining lease. It includes decommissioning and rehabilitation to achieve the approved final land use(s).
<b>Decommissioning</b>	The process of removing mining infrastructure and removing contaminants and hazardous materials.
<b>Decommissioning Phase of Rehabilitation</b>	Activities associated with the removal of mining infrastructure and removal and/or remediation of contaminants and hazardous materials. In the context of the rehabilitation management plan this phase of rehabilitation may also include studies and assessments associated with decommissioning and demolition of infrastructure or works carried out to make safe or ‘fit for purpose’ built infrastructure to be retained for future use(s) following lease relinquishment.

WORD	DEFINITION
<b>Department</b>	The Department of Regional NSW.
<b>Disturbance</b>	See Surface Disturbance.
<b>Disturbance area</b>	<p>An area that has been disturbed and that requires rehabilitation.</p> <p>This may include areas such as on-licence exploration areas, stripped areas ahead of mining, infrastructure areas, water management infrastructure, sewage treatment facilities, topsoil stockpile areas, access tracks and haul roads, active mining areas, waste emplacements (active/unshaped/in or out-of-pit), tailings dams (active/unshaped/uncapped), and areas requiring rehabilitation that are temporarily stabilised (i.e. managed to minimise dust generation and/or erosion).</p>
<b>Domain</b>	<p>An area (or areas) of the land that has been disturbed by mining and has a specific operational use (mining domain) or specific final land use (final land use domain). Land within a domain typically has similar geochemical and/or geophysical characteristics and therefore requires specific rehabilitation activities to achieve the associated final land use.</p>
<b>Ecosystem and Land Use Development</b>	<p>This phase of rehabilitation consists of the activities to manage maturing rehabilitation areas on a trajectory to achieving the approved rehabilitation objectives and completion criteria.</p> <p>For vegetated land uses this phase may include processes to develop characteristics of functional self-sustaining ecosystems, such as nutrient recycling, vegetation flowering and reproduction, and increasing habitat complexity, and development of a productive, self-sustaining soil profile.</p> <p>This phase of rehabilitation may include specific vegetation management strategies and maintenance such as tree thinning, supplementary plantings and weed management.</p>
<b>Ecosystem and Land Use Establishment</b>	<p>This phase of rehabilitation consists of the processes to establish the approved final land use following construction of the final landform.</p> <p>For vegetated land uses this rehabilitation phase includes establishing the desired vegetation community and implementing land management activities such as weed control. This phase of rehabilitation may also include habitat augmentation such as installation of nest boxes.</p>
<b>Exploration</b>	Has the same meaning as that term under the State Environmental Planning Policy (Mining, Petroleum Production and Extractive Industries) 2007.

WORD	DEFINITION
<b>Final landform and rehabilitation plan</b>	As defined in the Mining Regulation 2016.
<b>Final land use</b>	As defined in the Mining Regulation 2016.
<b>Form and way</b>	Means the form and way approved by the Secretary. Approved form and way documents are available on the Department’s website.
<b>Growth Medium Development</b>	<p>This phase of rehabilitation consists of activities required to establish the physical, chemical and biological components of the substrate required to establish the desired vegetation community (including short lived pioneer species).</p> <p>This phase may include spreading the prepared landform with topsoil and/or subsoil and/or soil substitutes, applying soil ameliorants to enhance the physical, chemical and biological characteristics of the growth media, and actions to minimise loss of growth media due to erosion.</p>
<b>Habitat</b>	Has the same meaning as that term under the <i>Biodiversity Conservation Act 2016</i> and the <i>Fisheries Management Act 1994</i> (as relevant).
<b>Indicator</b>	An attribute of the biophysical environment (e.g. pH, topsoil depth, biomass) that can be used to approximate the progression of a biophysical process. It can be measured and audited to demonstrate (and track) the progress of an aspect of rehabilitation towards a desired completion criterion (i.e. defined end point). It may be aligned to an established protocol and used to evaluate changes in a system.
<b>Land</b>	As defined in the <i>Mining Act 1992</i> .
<b>Landform Establishment</b>	<p>This phase of rehabilitation consists of the processes and activities required to construct the final landform.</p> <p>In addition to profiling the surface of rehabilitation areas to the approved final landform profile this phase may include works to construct surface water drainage features, encapsulate problematic materials such as tailings, and prepare a substrate with the desired physical and chemical characteristics (e.g. rock raking or ameliorating sodic materials).</p>
<b>Large mine</b>	As defined in the Mining Regulation 2016.
<b>Lease holder</b>	The holder of a mining lease.

WORD	DEFINITION
<b>Life of mine</b>	The timeframe of how long a mine is approved to mine, from commencement to closure.
<b>Mine rehabilitation portal</b>	<p>Means the NSW Resources Regulator’s online portal that lease holders must use (via a registered account) to:</p> <ul style="list-style-type: none"> <li>■ upload rehabilitation geographical information system (GIS) spatial data</li> <li>■ develop rehabilitation GIS spatial data (using online tracing functions)</li> <li>■ generate rehabilitation plans and rehabilitation statistics using the map viewer and Rehabilitation Key Performance Indicator functionalities.</li> </ul> <p>Data submitted to the mine rehabilitation portal is collated in a centralised geodatabase for use by the NSW Resources Regulator to regulate rehabilitation performance of lease holders.</p>
<b>Mining area</b>	As defined in the <i>Mining Act 1992</i> .
<b>Mining domain</b>	A land management unit with a discrete operational function (e.g. overburden emplacement), and therefore similar geophysical characteristics, that will require specific rehabilitation treatments to achieve the final land use(s).
<b>Mining land</b>	As defined in the <i>Mining Act 1992</i> .
<b>Native vegetation</b>	Has the same meaning as that term under section 60B of the <i>Local Land Services Act 2013</i> .
<b>Overburden</b>	Material overlying coal or a mineral deposit.
<b>Performance indicator</b>	An attribute of the biophysical environment (for example pH, slope, topsoil depth, biomass) that can be used to demonstrate achievement of a rehabilitation objective. It can be measured and audited to demonstrate (and track) the progress of an aspect of rehabilitation towards a desired completion criterion, that is, a defined end point. It may be aligned to an established protocol and used to evaluate changes in a system.

WORD	DEFINITION
<b>Phases of rehabilitation</b>	<p>The stages and sequences of actions required to rehabilitate disturbed land to achieve the final land use. The phases of rehabilitation are:</p> <ul style="list-style-type: none"> <li>■ active mining</li> <li>■ decommissioning</li> <li>■ landform Establishment</li> <li>■ growth medium development</li> <li>■ ecosystem and land use establishment</li> <li>■ ecosystem and land use development.</li> </ul>
<b>Progressive rehabilitation</b>	<p>The progress of rehabilitation towards achieving the approved rehabilitation completion criteria. This may be described in terms of domains, phases, performance indicators and rehabilitation completion criteria.</p>
<b>Rehabilitation Completion</b>	<p>The final phase of rehabilitation when a rehabilitation area has achieved the approved rehabilitation objectives and rehabilitation completion criteria for the final land use. Rehabilitation areas may be classified as complete when the NSW Resources Regulator has determined in writing that the relevant rehabilitation obligations have been fulfilled following submission of <i>Form ESF2 Rehabilitation completion and/or review of rehabilitation cost estimate</i> application by the lease holder.</p>
<b>Rehabilitation Completion criteria</b>	<p>As defined in the Mining Regulation 2016.</p>
<b>Rehabilitation cost estimate</b>	<p>As defined in the Mining Regulation 2016.</p>
<b>Rehabilitation management plan</b>	<p>As defined in the Mining Regulation 2016.</p>
<b>Rehabilitation objectives</b>	<p>As defined in the Mining Regulation 2016.</p>
<b>Rehabilitation risk assessment</b>	<p>As defined in the Mining Regulation 2016.</p>
<b>Rehabilitation schedule</b>	<p>The defined timeframes for progressive rehabilitation set out in the forward program.</p>

WORD	DEFINITION
<b>Relevant stakeholders</b>	<p>Means any persons or bodies who may be affected by the mining operations, including rehabilitation, carried out on the lease land, and includes:</p> <ul style="list-style-type: none"> <li>■ the relevant development consent authority</li> <li>■ the local council</li> <li>■ the relevant landholder(s)</li> <li>■ community consultative committee (if required under the development consent) or equivalent consultative group</li> <li>■ affected land holder(s)</li> <li>■ government agencies relevant to the final land use</li> <li>■ affected infrastructure authorities (electricity, telecommunications, water, pipeline, road, rail authorities)</li> <li>■ local Aboriginal communities, and</li> <li>■ any other person or body determined by the Minister to be a relevant stakeholder in relation to a mining lease.</li> </ul>
<b>Risk</b>	The effect of uncertainty on objectives. It is measured in terms of consequences and likelihood (AS/NZS ISO 31000:2009).
<b>Secretary</b>	The Secretary of the Department.
<b>Security deposit</b>	An amount that a mining lease holder is required to provide and maintain under a mining lease condition, to secure funding for the fulfilment of obligations under the lease (including obligations that may arise in the future).
<b>Surface disturbance</b>	Includes activities that disturb the surface of the mining area, including mining operations, ancillary mining activities and exploration.
<b>Tailings</b>	A combination of the fine-grained solid material remaining after the recoverable metals and minerals have been extracted from the mined ore, and any process water <sup>2</sup> .
<b>Waste</b>	Has the same meaning as that term under the <i>Protection of the Environment Operations Act 1997</i> .

<sup>2</sup> Commonwealth of Australia (DITR), 2007. *Tailings Management*.

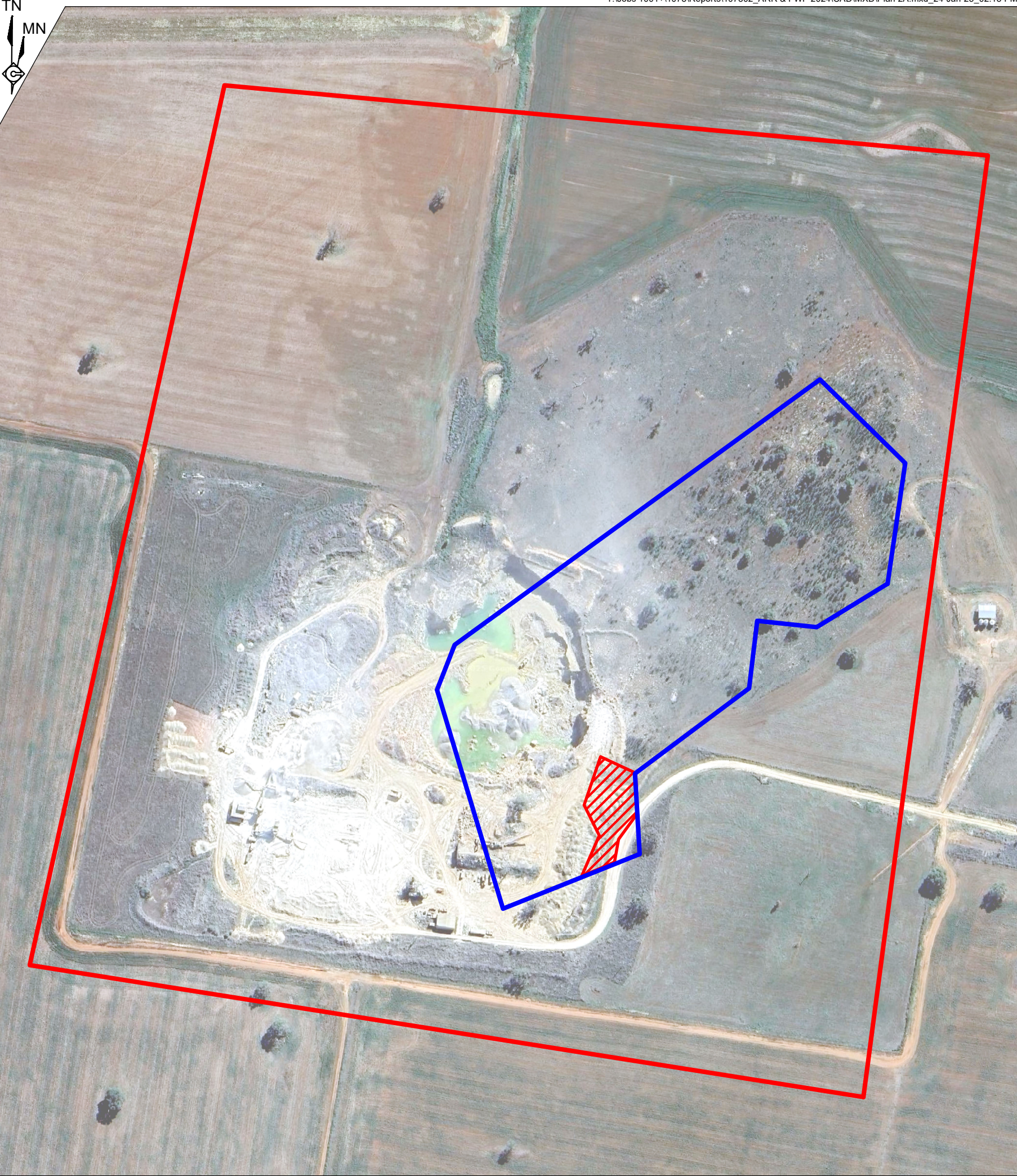
## Attachment 3 – Plans

Plan 2A

Plan 2B

Plan 2C

Forward Program (LARGE MINE) v2.1



**REFERENCE**

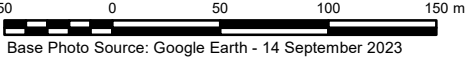
- Project Approval Boundary/Mine Site/ML1568
- Indicative Approved Extraction Boundary

**Forecast Data**

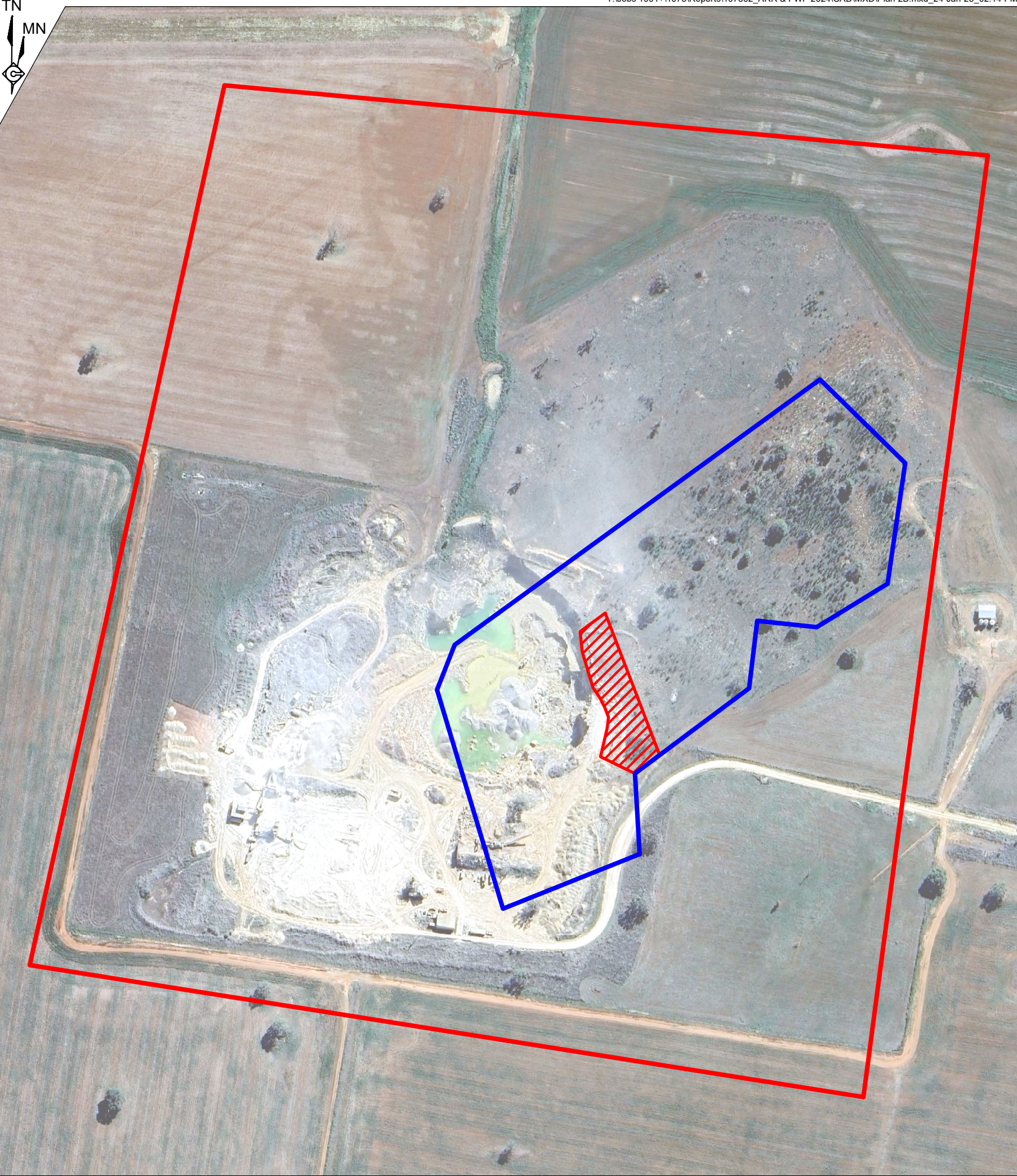
- Forecast Disturbance
- Forecast Land Prepared for Rehabilitation

Mine Name	Ezylime Mine
Plan Name	Plan 2A Mining and Rehabilitation - Year 1
Annual Reporting Period	26 October 2023 - 25 October 2024
Date Plan Created	24 January 2025
Data Theme Submission ID Number	8935

SCALE 1:3 500 (A3)



Base Photo Source: Google Earth - 14 September 2023



**REFERENCE**

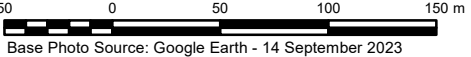
- Project Approval Boundary/Mine Site/ML1568
- Indicative Approved Extraction Boundary

**Forecast Data**

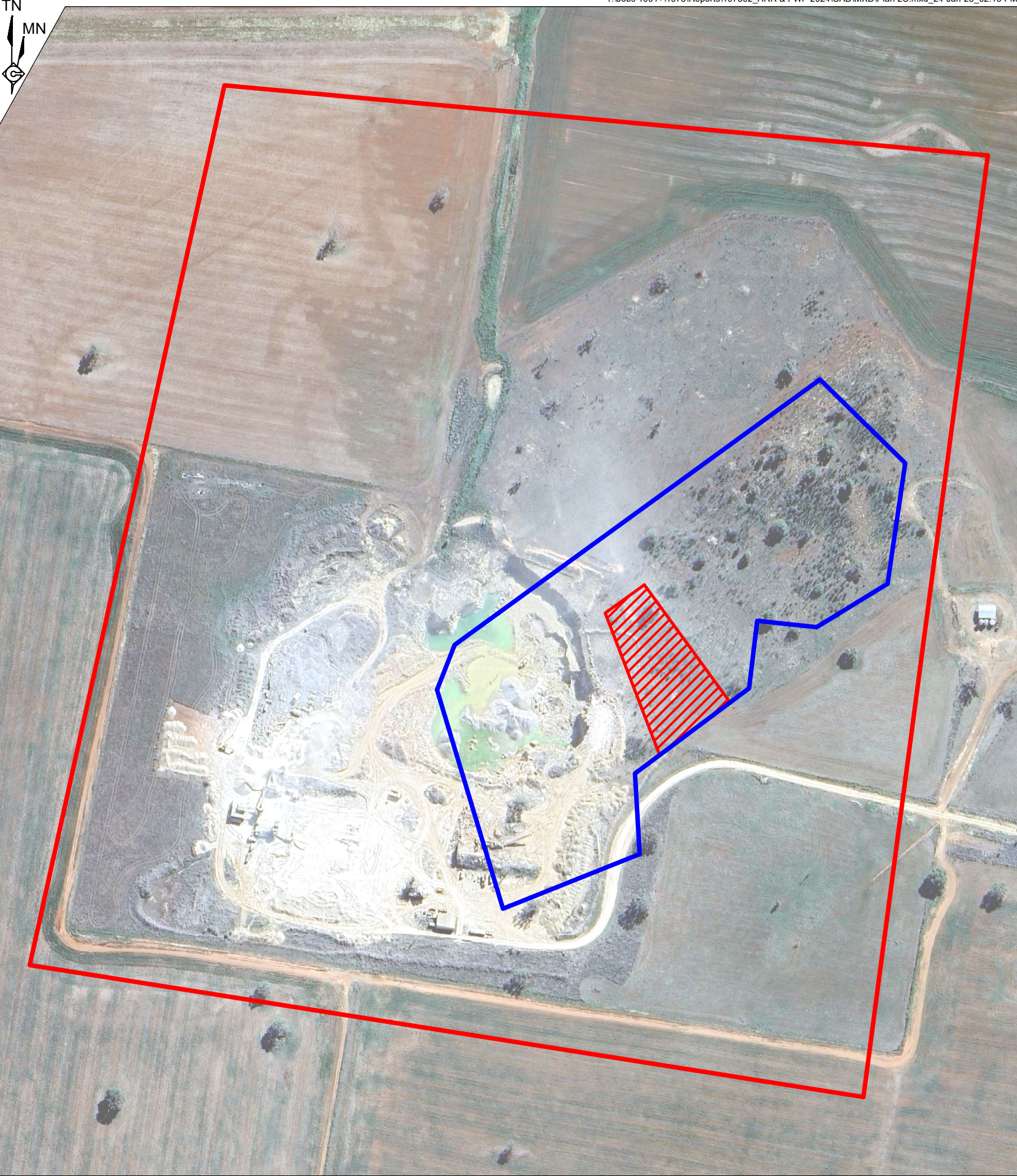
- Forecast Disturbance
- Forecast Land Prepared for Rehabilitation

Mine Name	Ezylime Mine
Plan Name	Plan 2B Mining and Rehabilitation - Year 2
Annual Reporting Period	26 October 2023 - 25 October 2024
Date Plan Created	24 January 2025
Data Theme Submission ID Number	8936





SCALE 1:3 500 (A3)



Base Photo Source: Google Earth - 14 September 2023

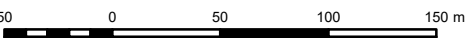


REFERENCE

-  Project Approval Boundary/Mine Site/ML1568
-  Indicative Approved Extraction Boundary
- Forecast Data**
-  Forecast Disturbance
-  Forecast Land Prepared for Rehabilitation

Mine Name	Ezylime Mine
Plan Name	Plan 2C Mining and Rehabilitation - Year 3
Annual Reporting Period	26 October 2023 - 25 October 2024
Date Plan Created	24 January 2025
Data Theme Submission ID Number	8937

SCALE 1:3 500 (A3)



Base Photo Source: Google Earth - 14 September 2023



## Open Cut Summary Rehabilitation Cost Estimation

Note: Sections of this page are automatically filled in from the registration page

Mine Name:	Ezylime Mine (Lynton Mine)		
Lease(s):	ML 1568		
Authorisation Owner:	Ezy Lime Pty Limited		
Mine Operator:	Ezy Lime Pty Limited		
Term of RCE:	Snapshot of disturbance - 2024		
Current Security:	\$125,000	Date of Last Security Deposit Review:	
Mine Contact:	Simon Shannon		
Position:	Director		
Address:	PO Box 54 Cudal, NSW 2864 Australia		
Phone:	401843190	Email:	simon@ausrockquarries.com

Domain		Security Deposit
Domain 1: Infrastructure		\$101,447
Domain 2: Tailings & Rejects		
Domain 3: Overburden & Waste		
Domain 4: Active Mine & Voids		
Domain 5: Management Activities		\$27,000
<b>Subtotal (Domains and Sundry Items)</b>		<b>\$128,447</b>
Contingency	10%	\$12,845
Post Closure Environmental Monitoring	10%	\$12,845
Project Management and Surveying	10%	\$12,845
<b>Total Security Deposit for the Mining Project (excl. of GST)</b>		<b>\$166,981</b>

Note: GST is not included in the above calculation or as part of rehabilitation security deposits required by the Department.

- Alterations have been made to unit prices within this spreadsheet. (Attach a separate sheet providing details of changes).
- The proposed rehabilitation design is generally consistent with the development consent for the project.

This Registration Form, Summary Report and calculation pages are to be printed and attached as an appendix the AEMR or MOP.

This mine security calculation has been estimated using the best available information at the time.  
It is a true and accurate reflection of the total rehabilitation liability held by this mine.

Simon Shannon  
Company Representative's Name

22/01/2025  
Date

Director  
Company Representative's Role / Responsibility

Simon Shannon  
Signature